

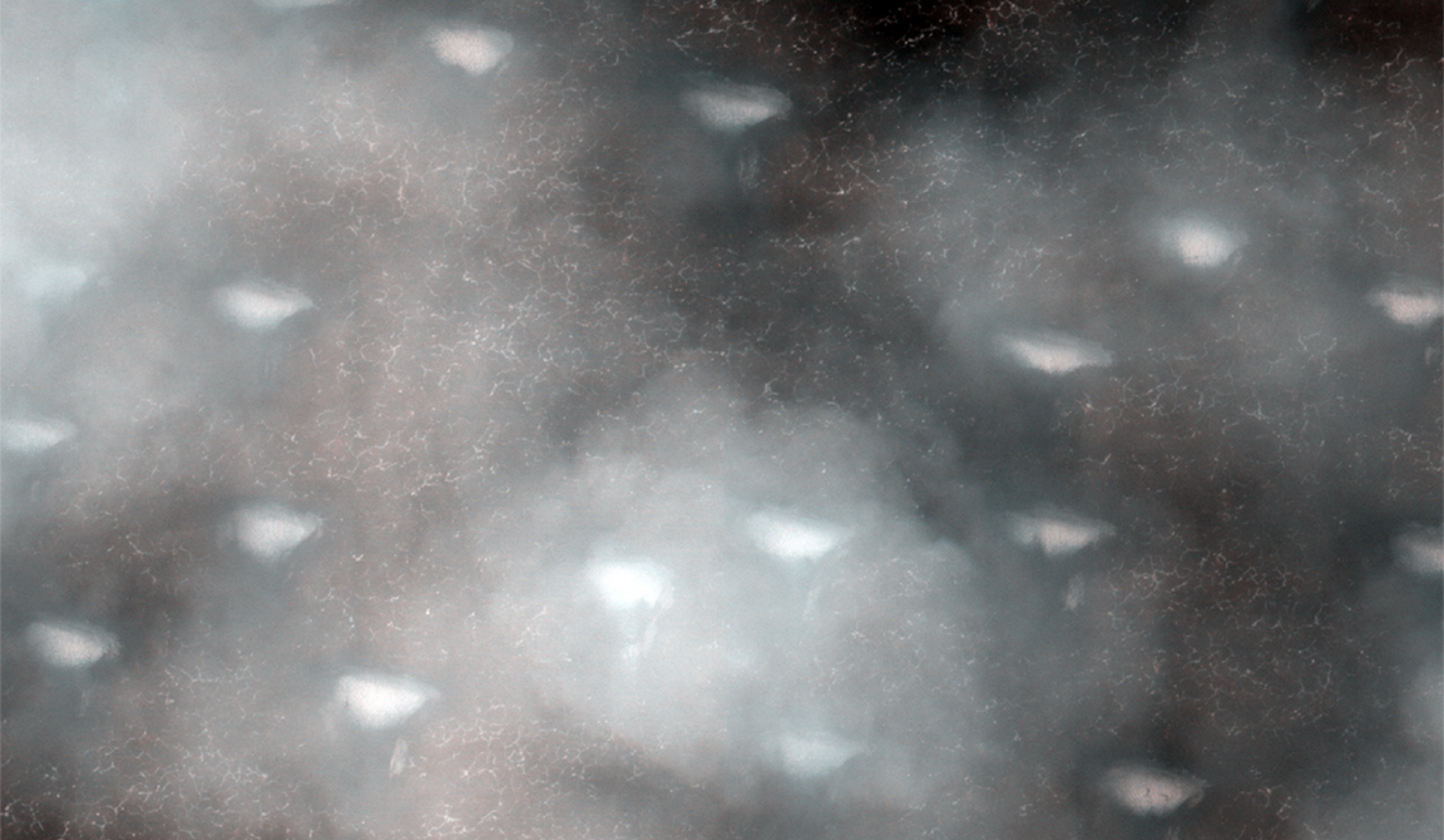


HIGH RESOLUTION IMAGING
SCIENCE EXPERIMENT

UAHIRISE.ORG



Lunar and Planetary Laboratory



A Cloudy Day

uahirise.org/ESP_025914_2540

Mars occasionally has cloudy weather. We intended to take a picture of the bright ice-covered dunes that are faintly visible through these thin clouds, but weather forecasting on Mars is just as challenging as on Earth.