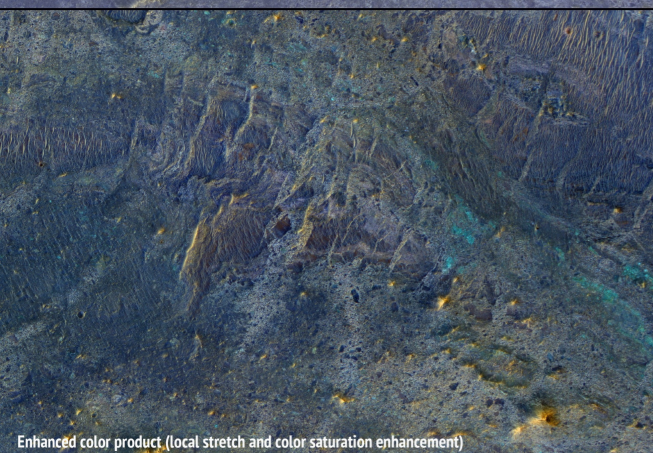




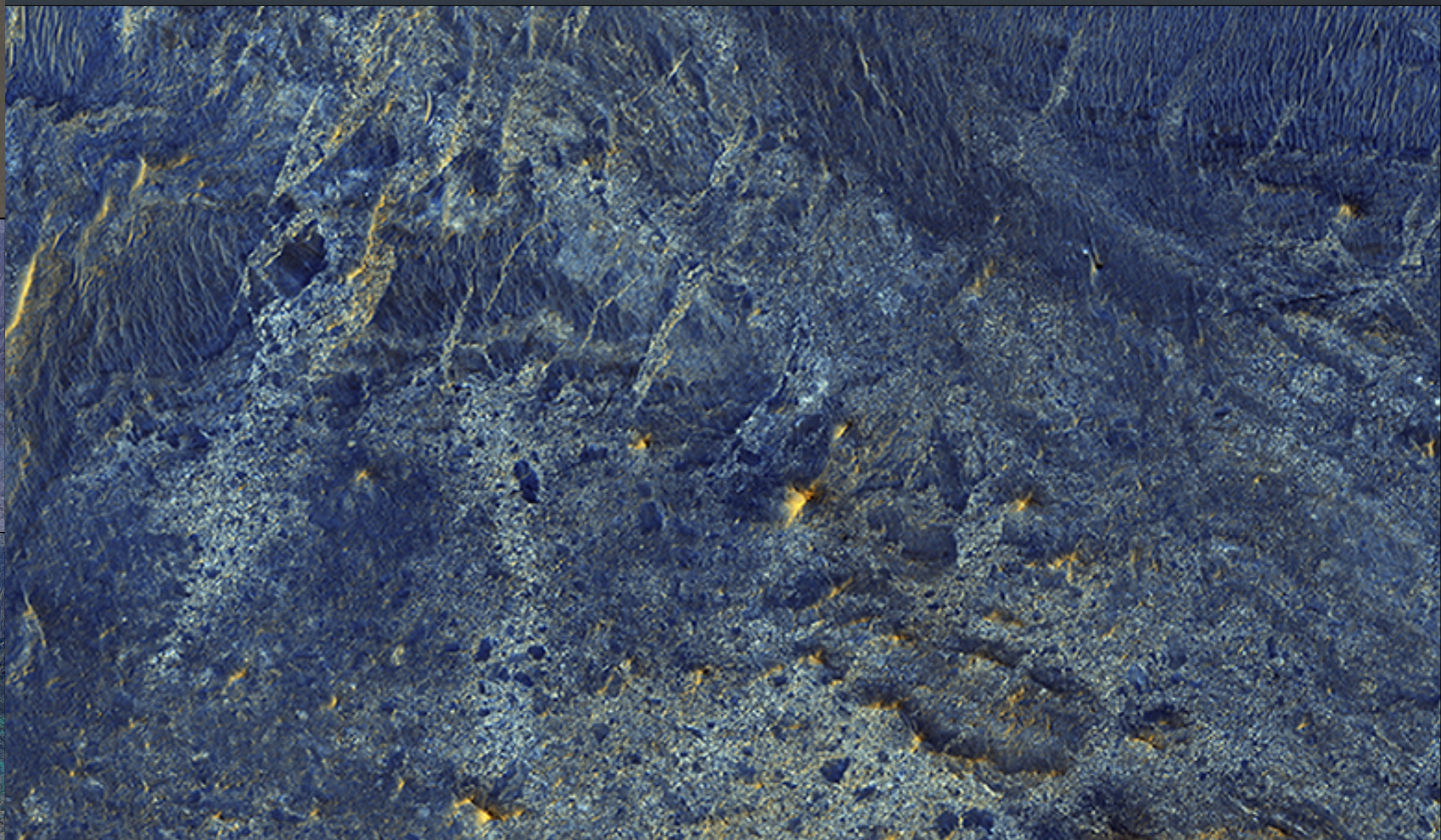
Natural color (as seen by humans in space)



HIRISE standard IRB color product (min-max stretch)



Enhanced color product (local stretch and color saturation enhancement)



A Human Bird's Eye View of Mars

Here is an example from the Nili Patera region of Mars, a candidate future landing site. This is an enhanced color product, in which each bandpass is given a linear stretch, sometimes saturating a small percentage of data to black or white to give the rest of the scene more contrast, followed by color saturation enhancement. Now we can see a diversity of colors that distinguish different surface units: dust, sand, and rocks with different minerals.